



MFS NEWSLETTER—MARCH 2020

Morgan Feed Supplies is proud to announce the introduction of a premium range of supplement products designed specifically for the sheep, cattle and horse industry in Australia. This range includes **lick blocks, loose licks and feedlot concentrates** and is *available now*.

(All information regarding these products can be requested from Morgan Feed Supplies, Landmark and associated stores, Elders and from your local stockist.)

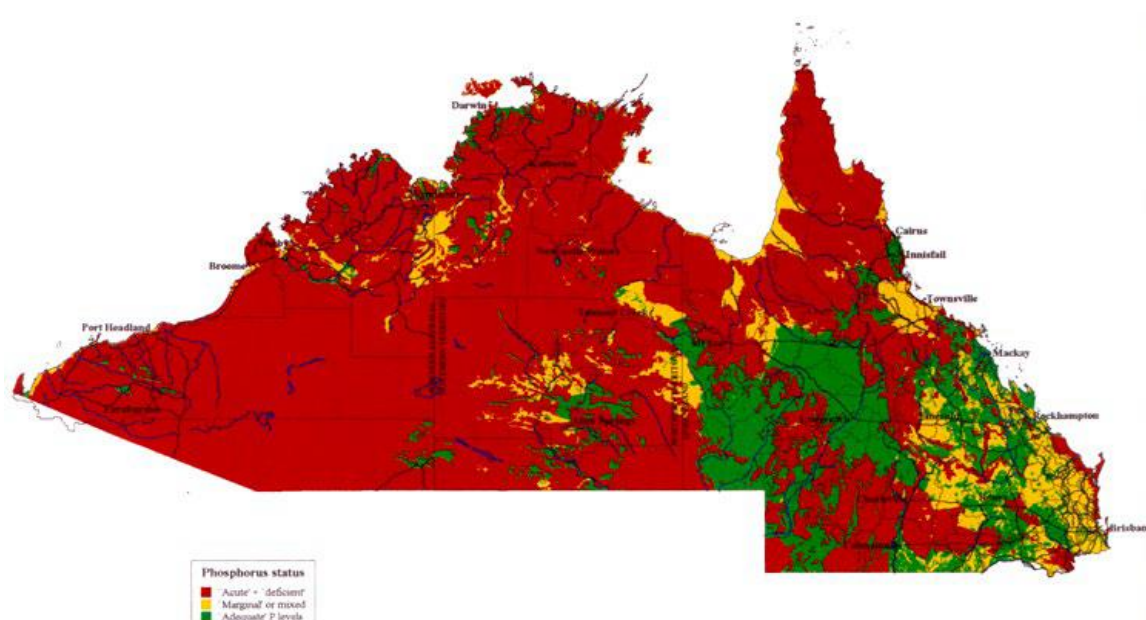
**COMING SOON:** the launch of the new Morgan Feed Supplies website!

## SUPPLEMENTATION – why the importance?

Macro mineral supplementation programs improve herd health and business profitability, through greater production outcomes.

Do you know that nitrogen (N), sulphur (S), sodium (Na) and phosphorus (P) are essential minerals for cattle and are often the limiting factor for live weight gain?

“Much of northern Australia is phosphorus deficient”.



**Phosphorus deficiency** – decreases fertility, LWG, skeletal growth and development and increases metabolic and bacterial disease.

P is required for formation of bone and teeth, reproductive health, absorption of carbohydrates via the gastrointestinal tract, metabolism of energy, feed intake, digestion and absorption of protein and milk production.

***P has more known functions than any other mineral element in the animal body.***

c) The estimated P requirements of *lactating breeders producing 5Kg milk/day* calculated following CSRIO (2007) and likely threshold values for adequacy of dietary P requirements. Any net mobilization of P from the body reserves will reduce these required amounts.

LIVEWEIGHT KG	LIVEWEIGHT gain (Kg/day)	Estimated DM intake (Kg/day)	Diet P required (g/day)	Diet P required (g/kgDM)
350	-0.3	8.3	13	1.6
350	0.3	11.8	20	1.7
350	0.9	15.3	28	1.8
400	-0.3	9.1	14	1.5
400	0.3	11.9	21	1.7
400	0.9	14.8	27	1.9
450	-0.3	12.6	16	1.3
450	0.3	16.2	24	1.5
450	0.9	19.9	31	1.6

(MLA, Producer phosphorus manual for the northern cattle industry. 2012)

**Morgan Feed Supplies products are proudly manufactured in Western Australia and the Vitamin and Mineral packages included are globally recognised within Optimum Vitamin Nutrition (OVN) with external QA audit and full traceability.**

**All blocks, licks and concentrates** contain vitamin and mineral packages including biotin and the vitamin D<sub>3</sub> metabolite (*25-hydroxycholecalciferol*), that has been shown to more than double the absorption of **calcium** and **phosphorus** from the diet, allowing the animal to replenish physiological stores at a greater rate and in a shorter period, promoting efficient production and lowering expense. . The benefits are proven through scientific research and data and include an **optional organic Eubiotic**. All products are formulated exclusively for Morgan Feed Supplies by \*\*\* Kai Blair.

**MORGAN FEED SUPPLIES** offer the following lists of products for immediate delivery:

#### SALT BASED LICK BLOCKS:

- \*8% Phosphorus Block (with/without urea)
- 10% Phosphorus Block
- 12% Sulphur Block
- Summer Dry Feed Block 5% urea
- Summer Dry Feed Block 10% urea
- Dry Feed Block 20% Urea
- Dry Feed Block 30% Urea
- Maintain Mineral Block (No Urea)
- \*\*Equine Gold + Omega3 Block



\*8% Phosphorus block plus micro minerals & vitamins including biotin and 25-hydroxycholecalciferol

#### LOOSE LICKS:

- Premium Calcium Sulphur Mineral Mix
- Sheep Lick - Maintain 5% Urea
- Sheep Lick – Thrive 5% Urea+ Protein
- Production Lick 8% Urea + Phosphorus
- Wet season Phosphorus Lick (No urea)
- Breeder Fertility Oxi Care Lick 4% Urea
- WA Northern Breeder Dry Season Lick 20% Urea
- WA Northern Breeder Dry Season Lick 25% Urea
- WA Northern Breeder Dry Season Lick 30% Urea
- OptiLick (horse lick)



Boxed Lick blocks, bulk concentrates and Calcium Sulphur Mineral Mix ready for distribution.

## FEEDLOT CONCENTRATES: available as listed below or by special formulation

- Lamb Std Feedlot Concentrate
- Standard Beef Feedlot High Min-Vit Concentrate (No Urea)
- Prime Feedlot 30 Concentrate 10% Urea
- Premium Beef Feedlot 60 Concentrate 15% Urea



The **\*\*Equine Gold + Omega-3 block**, is a high spec macro and micro mineral and vitamin supplement for all horse types, manufactured with premium ingredients including 'vegetarian & sustainable' Omega-3 (DHA<sup>gold™</sup>) and antioxidants which contains high levels of active & stable vitamins A, D3, E, K3, B1, B2, B3, B5, B6, B9, B12 and biotin (B7), with less than 4% sugar and 1% starch. This product will greatly benefit the horse's visual and brain development, trainability, immune and inflammation, digestion, metabolic syndrome, heart health, memory and visual performance, mobility and joint care, and skin and coat care. This product is a consistent, sustainable, nonmarine source of DHA which is free of ocean-borne contaminants and is vegetarian.

\*\*\***Kai Blair**, of Blair Agri Advisors, is employed by Morgan Feed Supplies. His professional expertise and advice to farmers and cattlemen has been invaluable. Kai is a ruminant nutritionist, animal scientist, embryologist and cattle grazer who consults globally in animal science and bio-technical reproduction, with beef, dairy, feedlot, lamb and wool clients throughout Australia and many other countries.



Morgan Feed Supplies:

377 Red Gully Road, Toodyay, WA 6566 Ph: 08 9 574 5234, 0427092217 0427 373 526

Email: [mfsaccounts@morganfeedsupplies.com.au](mailto:mfsaccounts@morganfeedsupplies.com.au) W: [www.morganfeedsupplies.com.au](http://www.morganfeedsupplies.com.au)